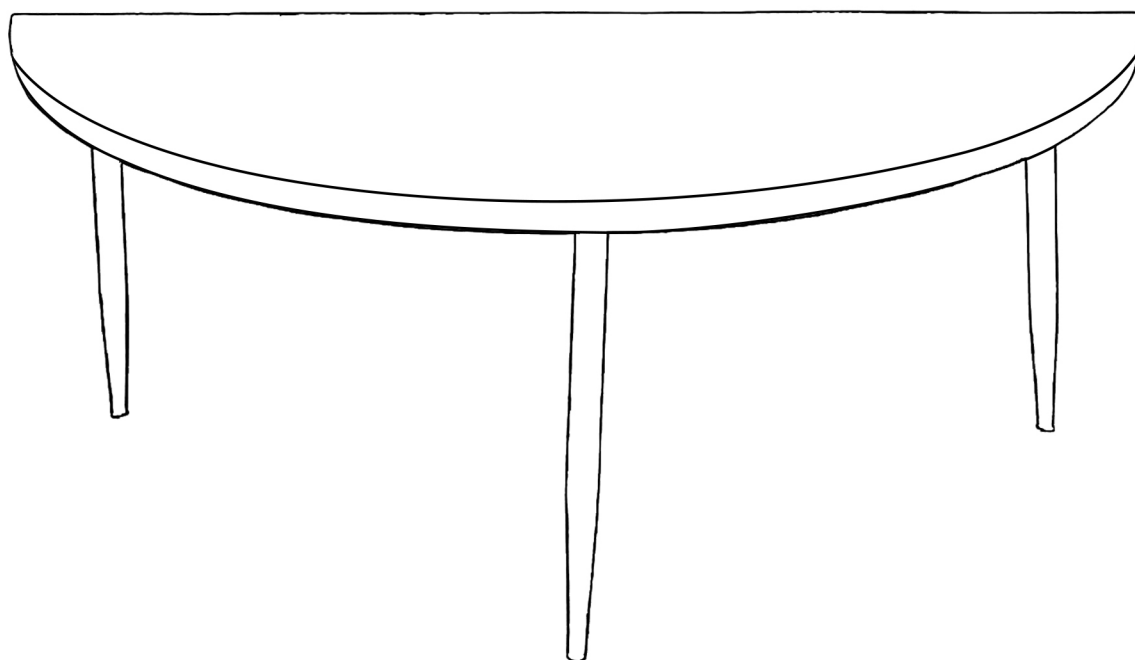


GOLDEN TIGER EYE TABLE

Assembly Instructions

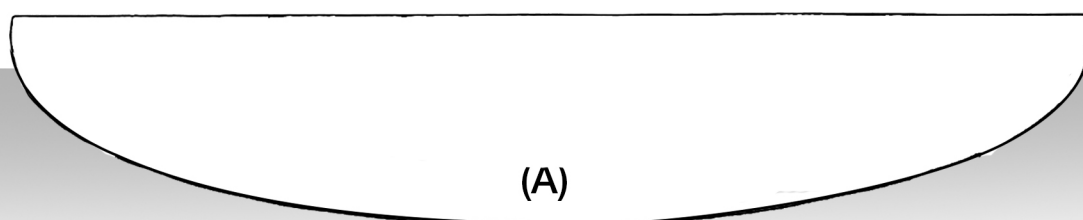


Parts Listing:

(A)	Stone Top	
(B)	Brass Legs	3 units
(C)	Screws	10 units
(D)	A hex key or Allen key	1 unit

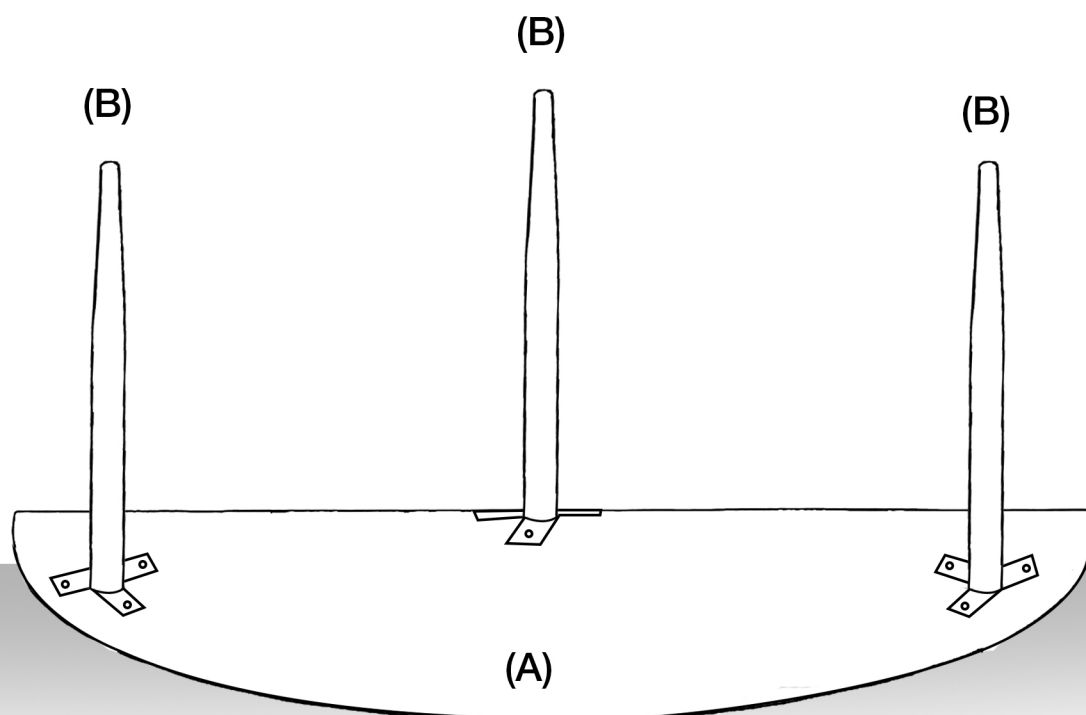
Step 1:

Place the Stone Top (A) polished side down on a clean, even surface.



Step 2:

Position the three Brass Legs (B) to the Stone Top (A).



Step 3:

Use the Screws (C) to attach the Brass Legs (B) firmly in position to Stone Top (A).

With the help of a Hex key or Allen key (D), tighten all the screws to keep the table steady.

